

▶ MTX60ER

Trench Rammers

Outstanding compaction ability and balance.



- ▶ 4 STROKE SUBARU ENGINE
- ▶ THROTTLE LEVER
- ON/OFF/FUEL STOP
- ▶ 3 STAGE AIR CLEANER SYSTEM
- ▶ VAS ANTI-VIBRATION SYSTEM
- ▶ 3-LITRE FUEL TANK
- ▶ 1-PIECE WOODEN/STEEL FOOT
- ▶ EASY LOAD HANDLE ROLLER
- ▶ HEAVY DUTY RIBBED BELLOWS

▶ MTX60ER Trench Rammers

FEATURES:

4 stroke Subaru engine
Throttle lever -On/Off/Fuel Stop
3 stage air cleaner system
VAS anti-vibration system
Large 3-litre fuel tank
1-piece wooden foot c/w steel base
Easy load handle roller
Heavy duty ribbled bellows

SPECIFICATIONS:

MODEL	WEIGHT	PLATE (mm)	IMPACT FORCE
MTX-60ER	64KG	340 X 265	13.6kN
JUMPING STROKE	ENGINE	PETROL	
50 - 80mm	SUBARU 4-Stroke	SUBARU ER12D 3.5 Hp	



THROTTLE LEVER



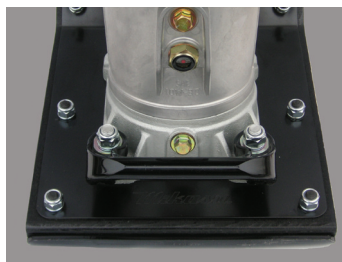
AIR CLEANER SYSTEM



VAS ANTI-VIBRATION SYSTEM



3-LITRE FUEL TANK



1-PIECE WOODEN/STEEL FOOT



EASY LOAD HANDLE ROLLER



HEAVY DUTY BELLOWS

PRODUCT RANGE:



MTR40F



MVCF60RVAS



MVH306DSNC

PARTS SERVICE:

We are proud of the back-up service we offer to customers. The importance of stocking genuine spare parts for all the equipment we supply is a high company priority.

AUCKLAND HEAD OFFICE
6-10 Parkway Drive,
Mairangi Bay, Auckland
Phone: (+64) 09 443 2436
Fax: (+64) 09 443 2435
Email: sales@yrco.co.nz

SOUTH ISLAND OFFICE
20 Nga Mahi Road,
Sockburn, Christchurch
Phone: (+64) 03 341 6923
Fax: (+64) 03 341 6955
Email: gregl@yrco.co.nz


PROUD TO BE 100%
NEW ZEALAND
OWNED & OPERATED



SUBARU

Industrial Power Products

YR®
**YOUNG/MAN
RICHARDSON
& CO. LTD.**